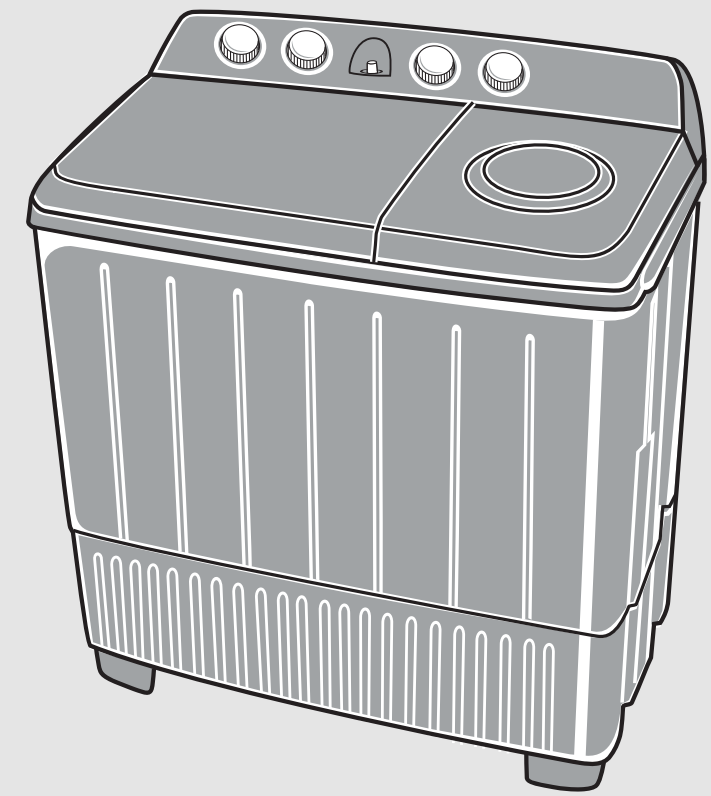


A1111PT1SMSWA

143 mm

50 mm

210 mm



INSTRUCTION MANUAL
SEMI-AUTOMATIC WASHING MACHINE
MODEL: EWS87262WA / EWS98262WA
EWS10262WA / EWS11262WA
EWS13262WA / EWS14262WA

封底

封面

技术要求:

- 1、商标: Electrolux
- 2、尺寸: 210X143mm
- 3、其余符合QB/XL20产品说明书技术标准

宁波新乐电器有限公司

说明书

A1111PT1SMSWA

标记处数	分区	更改文件号	签名	日期
设计			工艺	
制图			标准	
校对			会签	
审核			批准	

70克双胶纸		
阶段	标记	重量
A		
共 8 张		第 1 张

产品型号	
旧底图总号	
底图总号	
签字	颜色②
日期	颜色①
	颜色

图文均为黑色

1

2

3

4

A1111PT1SMSWA

A

B

C



*Thank you for choosing Electrolux for your washing machine brand.
Our washing machines are developed with high technical and quality standards,
with features to offer you even more comfort.*

*Read all instructions before using this appliance. This book contains valuable
information about operation, care and service. Keep it in a safe place.*

产品型号

旧底图总号

底图总号

签字

日期

技术要求:

- 1、商标: Electrolux
- 2、尺寸: 210X143mm
- 3、其余符合QB/XL20产品说明书技术标准

颜色Ⓑ

颜色Ⓐ

颜色

图文均为黑色

						70克双胶纸			宁波新乐电器有限公司
标记处数	分区	更改文件号	签名	日期	阶段	标记	重量	比例	
设计			工艺						说明书
制图			标准			A			
校对			会签						A1111PT1SMSWA
审核			批准			共 8 张	第 2 张		

A1111PT1SMSWA

A

B

C

CONTENTS



Name of Parts 1
 Description of Control Panel 1
 Preparations before Using the Washing Machine 1
 Weight Reference of Washing Materials 2
 Standard of Washing Time and Detergent Dosage 2
 Washing Method 3
 Rinsing Method 3
 Spinning Method 4
 Case Maintenance 5
 Cleaning the Lint Filter 5
 Antifreezing Protection 5
 Operation When Washing Materials are Dropped into the Outside of the Spin Tub 6
 Change the Position of the Drain Hose 6
 Installation and Maintenance 7
 Others 8
 Main Technical Parameters 10

EWS11262WA

Parameter / Function	Capacity (dry clothes)	Power supply	Input power	Maximum time	Water volume	Washing and spinning methods	Noise	Dimensions (L X W X H)	Weight
Wash	10.0kg	230V/ 60Hz	500W	15 min.	High 68.0L Mid 60.0L Low 50.0L	Automatic forward and backward rotation hand rubbing	62dB(A)	796×470×974 (mm)	Net weight: 20.5 kg
Spin	5.6kg		200W	5 min.		Centrifugal	72dB(A)		

EWS13262WA

Parameter / Function	Capacity (dry clothes)	Power supply	Input power	Maximum time	Water volume	Washing and spinning methods	Noise	Dimensions (L X W X H)	Weight
Wash	12.0kg	230V/ 60Hz	550W	15 min.	High 78.0L Mid 70.0L Low 48.0L	Automatic forward and backward rotation hand rubbing	62dB(A)	854×490×995 (mm)	Net weight: 23 kg
Spin	6.5kg		230W	5 min.		Centrifugal	72dB(A)		

EWS14262WA

Parameter / Function	Capacity (dry clothes)	Power supply	Input power	Maximum time	Water volume	Washing and spinning methods	Noise	Dimensions (L X W X H)	Weight
Wash	14.0kg	230V/ 60Hz	600W	15 min.	High 105.0L Mid 83.0L Low 51.0L	Automatic forward and backward rotation hand rubbing	62dB(A)	957×549×1045 (mm)	Net weight: 34 kg
Spin	7.5kg		250W	5 min.		Centrifugal	72dB(A)		

产品型号

旧底图总号

底图总号

签字

日期

技术要求:

- 1、商标: Electrolux
- 2、尺寸: 210X143mm
- 3、其余符合QB/XL20产品说明书技术标准

颜色Ⓑ	
颜色Ⓐ	
颜色	图文均为黑色

标记处数	分区	更改文件号	签名	日期
设计			工艺	
制图			标准	
校对			会签	
审核			批准	

70克双胶纸		
阶段标记	重量	比例
A		
共 8 张	第 3 张	

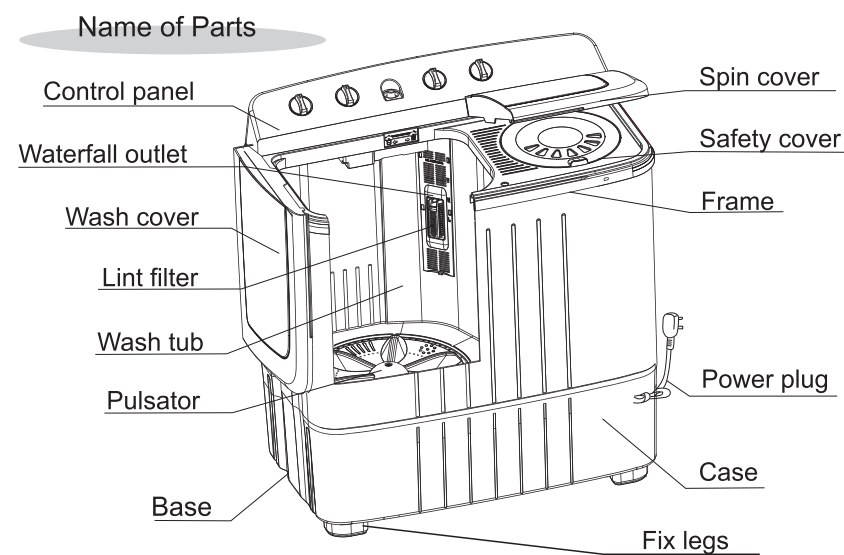
宁波新乐电器有限公司

说明书

A1111PT1SMSWA

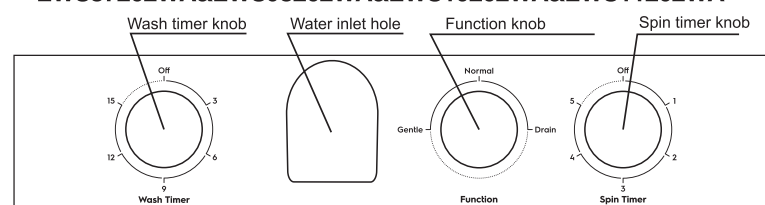
A1111PT1SMSWA

Structure Instruction 

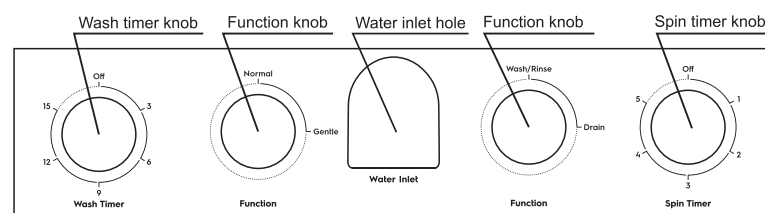


Description of Control Panel

EWS87262WA&EWS98262WA&EWS10262WA&EWS11262WA



EWS13262WA&EWS14262WA



Preparations before Using the Washing Machine

- Connect the inlet hose,
- Lay down the upper (lower) drain hose and connect it to the sewer,
- Refer to the reference data in the table for washing,

Main Technical Parameters

EWS87262WA

Parameter / Function	Capacity (dry clothes)	Power supply	Input power	Maximum time	Water volume	Washing and spinning methods	Noise	Dimensions (L X W X H)	Weight
Wash	7.0kg	230V/60Hz	380W	15 min.	High 59.0L Mid / Low 40.0L	Automatic forward and backward rotation hand rubbing	62dB(A)	744×420×934 (mm)	Net weight: 19 kg
Spin	4.0kg								

EWS98262WA

Parameter / Function	Capacity (dry clothes)	Power supply	Input power	Maximum time	Water volume	Washing and spinning methods	Noise	Dimensions (L X W X H)	Weight
Wash	8.0kg	230V/60Hz	420W	15 min.	High 58.0L Mid 45.0L Low 30.0L	Automatic forward and backward rotation hand rubbing	62dB(A)	754×440×932 (mm)	Net weight: 19 kg
Spin	5.6kg								

EWS10262WA

Parameter / Function	Capacity (dry clothes)	Power supply	Input power	Maximum time	Water volume	Washing and spinning methods	Noise	Dimensions (L X W X H)	Weight
Wash	9.0kg	230V/60Hz	450W	15 min.	High 68.0L Mid 60.0L Low 50.0L	Automatic forward and backward rotation hand rubbing	62dB(A)	796×470×914 (mm)	Net weight: 19 kg
Spin	5.6kg								

产品型号

旧底图总号

底图总号

签字

日期

技术要求:

- 1、商标: Electrolux
- 2、尺寸: 210X143mm
- 3、其余符合QB/XL20产品说明书技术标准

颜色②

颜色①

颜色

图文均为黑色

标记处数	分区	更改文件号	签名	日期
设计			工艺	
制图			标准	
校对			会签	
审核			批准	

70克双胶纸		
阶段	标记	重量
A		
共 8 张		第 4 张

宁波新乐电器有限公司

说明书

A1111PT1SMSWA

Others



When the spin tub is running, be careful to avoid touching washing materials and the spin tub with your bare hands.	Items that can not be washed in spin tub with your bare hands.
If the spin tub doesn't stop running within 15 seconds after the spin cover is opened, please stop using it and contact the designated service center.	Do not wash items that are stained with paint, petrol and other volatile or flammable substances, as this could cause a fire. In addition, such items as ropes and buttons should be packed before washing and spinning.
Do not install the washing machine in the bathroom.	Do not forget to close the inner spin cover.
This will prevent the case from corrosion and reduce the insulation performance.	If washing materials in the spin tub are tossed out, they are easily damaged.
Notes for scrubbing	Do not use warm water above 50°C.
In order to avoid damaging electrical components, do not scrub operation parts of the control panel with water.	This will prevent plastic deformation and aging.
Do not let children play near the tub.	Keep away from sources of ignition and heat.
It's very dangerous if children fall into the tub.	In order to avoid deformation and fire, do not place lit mosquito coils or candles on the washing machine.

Be sure to comply with all the notes above.

Usage method



Notes before washing

- Check that there are no foreign objects such as coins, hairpins, mud or sand in the pocket.
- Turn the clothes that are more likely to peel inside out.
- Strings should be knotted in advance to prevent entanglement.
- Fasten the zippers.
- Clothes can be classified for washing according to the texture, dirty degree and color.
- For small pieces (e.g., silk stockings) or fluffy clothes, put them into the washing net for washing.

Attachment: Weight Reference of Washing Materials

T-shirt (cotton) about 150 g	Shirt (blend) about 200 g	Slipover (cotton) about 500 g
Panties (cotton) about 50 g	Socks (blend) about 50 g	Scarf (cotton) about 300 g

Standard of Washing Time and Detergent Dosage

Type of washing material	Model			Washing time (min.)	Water flow	Water level	Standard of detergent dosage		
	Washing volume (kg)						Concentrated powder detergent	General synthetic detergent	Concentrated liquid detergent
Fiber and thin clothes	1.5	2.0	3.0	About 3 minutes	Gentle	Low	30L water with 25g detergent (for the water volume of corresponding water level, see P10-P11 in the Main Technical Parameters)	30L water with 40g detergent (for the water volume of corresponding water level, see P10-P11 in the Main Technical Parameters)	30L water with 25ml detergent (for the water volume of corresponding water level, see P10-P11 in the Main Technical Parameters)
	1.5~3.5	2.0~4.0	3.0~6.0	About 3~5 minutes	Gentle	Mid			
Cotton, linen and blend	2.0	2.5	3.5	About 7 minutes	Gentle	Mid	30L water with 25g detergent (for the water volume of corresponding water level, see P10-P11 in the Main Technical Parameters)	30L water with 40g detergent (for the water volume of corresponding water level, see P10-P11 in the Main Technical Parameters)	30L water with 25ml detergent (for the water volume of corresponding water level, see P10-P11 in the Main Technical Parameters)
	2.0~7.0	2.5~7.5	3.5~8.0	About 7~10 minutes	Gentle	High			
Oily cotton, and linen fabrics (e.g. dungaree)	2.0	2.5	3.5	About 10 minutes	Normal	Mid	30L water with 25g detergent (for the water volume of corresponding water level, see P10-P11 in the Main Technical Parameters)	30L water with 40g detergent (for the water volume of corresponding water level, see P10-P11 in the Main Technical Parameters)	30L water with 25ml detergent (for the water volume of corresponding water level, see P10-P11 in the Main Technical Parameters)
	2.0~top	2.5~9.0	3.5~top	About 10~15 minutes	Normal	High			

技术要求:

- 1、商标: Electrolux
- 2、尺寸: 210X143mm
- 3、其余符合QB/XL20产品说明书技术标准

标记处数	分区	更改文件号	签名	日期	70克双胶纸			宁波新乐电器有限公司	
设计			工艺		阶段标记	重量	比例	说明书	
制图			标准		A				
校对			会签		共 8 张			A1111PT1SMSWA	
审核			批准		第 5 张				

产品型号	
旧底图总号	
底图总号	
签字	颜色②
日期	颜色①
	颜色 图文均为黑色

Usage method



Others

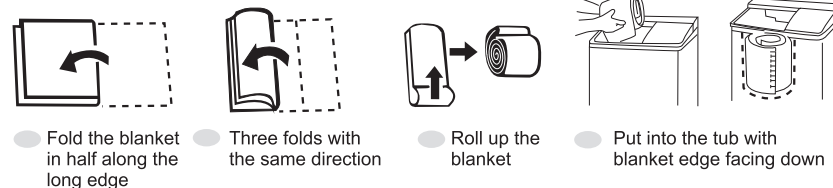
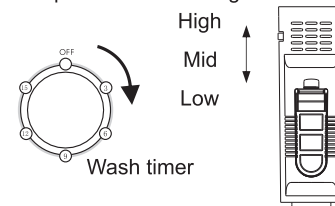


Washing Method

1. Insert the inlet hose into the wash inlet on the control panel, and turn on the tap.
2. Set the water flow (Normal or Gentle) according to the texture of clothes.
3. When filling water to half of the specified water level, add the detergent and stir. Put in washing materials (turn off the tap and soak for a while), and then fill water to the water level and turn off the tap.
4. Turn the wash timer knob to the selected time position for washing.
5. After washing, set the drain selector knob to the Drain position for draining.

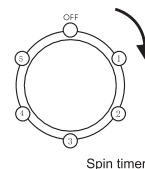
This machine can wash no more than 4 kg of blended blanket with the "hand washing" label (i.e. the blanket that can be washed by water). The method is as follows:

- 1 Dissolve the neutral liquid detergent with adequate water (below 50°C) and pour into the washtub.
- 2 Fold the blanket as shown in the figure and put it into the tub.



Rinsing Method

- 1 To save time, water and energy, please do the spinning work before rinsing. After spinning, put the clothes into the washtub.
- 2 Insert the inlet hose into the wash inlet on the control panel, and turn on the tap.
- 3 Set the drain selector knob to the "Normal" or "Gentle" position according to the texture of clothes.
- 4 Select the water level based on the washing volume.
- 5 After filling water to the level, turn off the tap to save water.
- 6 Turn the wash timer knob to the selected time for rinsing.
- 7 After rinsing, put washing materials into the spin tub to spin for 1 to 3 minutes.
- 8 Drain out the rinsing water in the washtub.
- 9 According to the turbidity degree of rinsing water, materials can be rinsed several times. Spin and dry after washing.



Notes

The connection mode of the power cord of this machine is Y-shaped connection. The user should not open or reconnect the wire connector in the washing machine, as it will lead to adverse consequences. If this part needs to be repaired, please contact the designated service center.

Note:

- After using, be sure to unplug the power cord.
- Be sure to use plug that is properly grounded.
- The maximum gradient of the supporting surface of the washing machine should not exceed 2°.
- Do not detach electrical wires and components in the machine by yourself.
- While using the machine, the vent on the base should not be blocked by foreign objects (carpets, etc.).
- Never connect the grounding wire with the live wire, or it could lead to an electric shock hazard.
- If the power cord is damaged, it must be replaced by the manufacturer or its service center or a similar qualified person in order to avoid a hazard.
- When removing the liner of the spin tub, be careful to avoid its debris falling into the outside of the spin tub, which could result in abnormal noise during spinning.

If the following symptoms occur, please disconnect the power plug and perform the following checks:

Symptom	Reason
The washing machine does not work.	<ul style="list-style-type: none"> ● Check that the power supply is in good operation. ● Check that the power plug is inserted properly. ● Check that the wash timer knob or the spin timer knob is in the "OFF" position.
The drain hose does not work.	<ul style="list-style-type: none"> ● Check that the drain hose is put down. ● Check that the drain hose is not frozen. ● Check that the drain hose is not blocked by lint or debris.
There is abnormal noise during washing.	<ul style="list-style-type: none"> ● Check that there are no coins or any other foreign objects dropped into the washtub.
There is abnormal noise and violent vibration during spinning.	<ul style="list-style-type: none"> ● Check that the washing machine is placed on a flat, stable floor. ● Check that clothes are evenly distributed in the spin tub. ● Check that there are no washing materials or foaming debris dropped into the outside of the spin tub?

产品型号

旧底图总号

底图总号

签字

日期

技术要求:

- 1、 商标: Electrolux
- 2、 尺寸: 210X143mm
- 3、 其余符合QB/XL20产品说明书技术标准

颜色②	
颜色①	
颜色	图文均为黑色

标记处数	分区	更改文件号	签名	日期
设计			工艺	
制图			标准	
校对			会签	
审核			批准	

70克双胶纸		
阶段标记	重量	比例
A		
共 8 张	第 6 张	

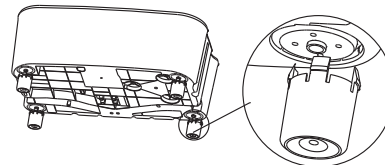
宁波新乐电器有限公司
说明书
A1111PT1SMSWA

Installation and Maintenance

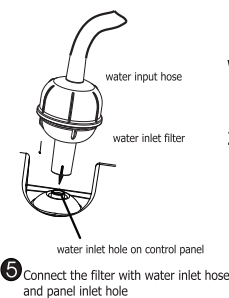
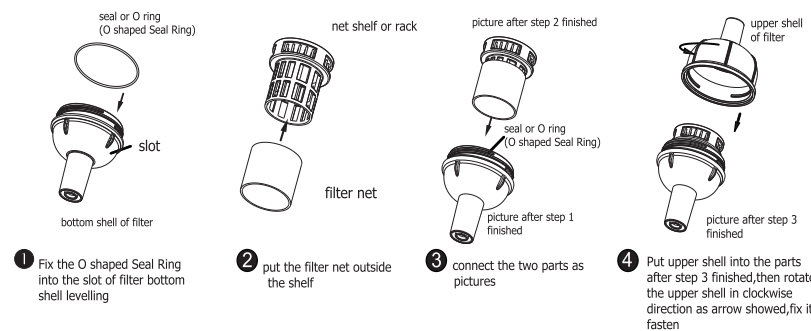


How to Fix Legs

- Lay down the machine on the soft sheets, such as the blanket, etc with its front downward to prevent damage to the machine.
- Inset four legs in the plastic base respectively as shown below.



Method of Assembling Water Filter(Free of Charge)



Warnings:
 1.If water leakage happens,check picture 1,the first step about whether O shaped Seal ring has been fixed levelling, if not,re-fasten it again.
 2.Filter net is required to wash regularly. Put the net out to wash is permitted.

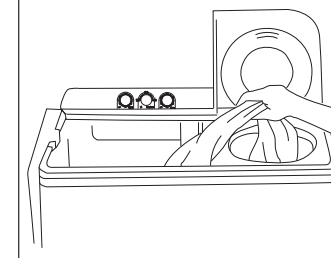
Artwork only to hint,the specific should follow real objects

Usage method

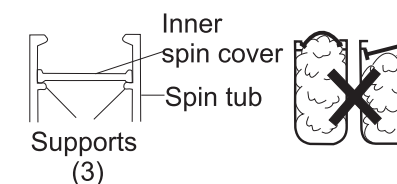


Spinning Method

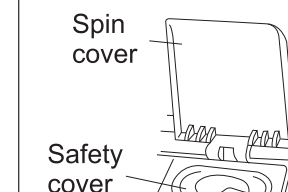
1.Shake out washing materials and put them into the spin tub



2.Put the inner spin cover onto supports in the spin tub horizontally. Confirm the inner spin cover is level.

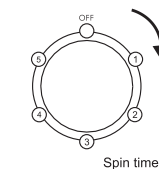


3.Cover the safety cover and spin cover.



4.Refer to the following table to select the spinning time of spin timer.

Washing materials	Spinning time
Wire	About 50 seconds
Thin clothes (fiber/blend)	About 1 minute
Knitwear (fiber)	About 1~2 minutes
Underwear (cotton)	About 2~3 minutes
Slipover (cotton/linen)	About 3~4 minutes
Toweling coverlet (cotton)	About 5 minutes



! If strong vibration occurs in the spin tub, open the spin cover immediately. Make sure that the washing machine is placed on a flat,stable floor and then readjust washing materials, distributing them

! To do spinning and draining together, please spin for 1 minute before draining.

技术要求:

- 商标: Electrolux
- 尺寸: 210X143mm
- 其余符合QB/XL20产品说明书技术标准

标记处数	分区	更改文件号	签名	日期
设计			工艺	
制图			标准	
校对			会签	
审核			批准	

70克双胶纸		
阶段	标记	重量
A		
共 8 张		第 7 张

宁波新乐电器有限公司		
说明书		
A1111PT1SMSWA		

产品型号	
旧底图总号	
底图总号	
签字	
日期	

颜色(B)	
颜色(A)	
颜色	图文均为黑色

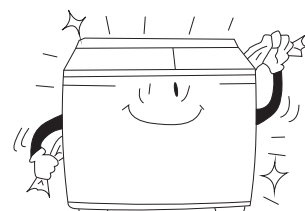
Installation and Maintenance



- ⚠ Do not wash or spin waterproof clothes or clothes that float easily (poncho, down and feather products etc.) in order to avoid abnormal vibration or damage to clothes.
- ⚠ After you use the washing machine, never forget to do the following two things:
 1. Disconnect the power plug.
 2. Remove the inlet hose.

Case Maintenance

After you use the washing machine, wipe the moisture and stains on its surface with a soft cloth. To avoid damage to the plastic surface, do not use cleaning agents or volatile chemicals.



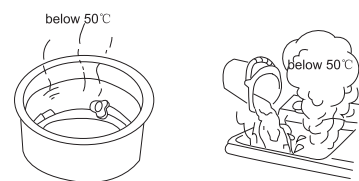
Cleaning the Lint Filter

- ▲ Removing method:
- 1 Press the buckle and pull out the lint filter component.
 - 2 Open and empty the lint filter component and then close it again.
- ▲ Installation method:
- After cleaning, insert the projecting parts on the lower lint filter component into the waterfall outlet and push up the buckle.



Antifreezing Protection

- ▲ To prevent from freezing:
- 1 Turn off the tap, remove the inlet hose and drain the water completely.
 - 2 Put down the drain hose and set the drain selector knob to the "Drain" position to empty the water in the tub.
- ▲ If the water is frozen, please take the following steps:
- 1 Put the inlet hose into warm water with a temperature of 50°C.
 - 2 Take about 2 liters of warm water below 50°C and put into the washtub for about 10 minutes.
 - 3 Fit the inlet hose and turn on the tap to confirm inlet and drain hoses work properly.

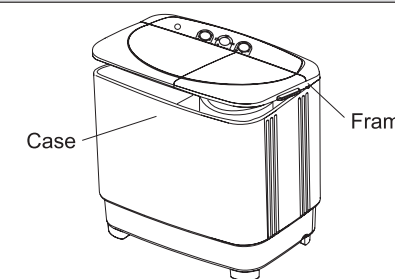


Installation and Maintenance



Operation When Washing Materials are Dropped into the Outside of the Spin Tub

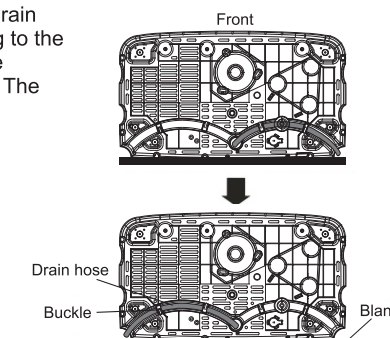
- 1 Remove all screws on the frame with a Philips screwdriver.
- 2 Pull up the frame with both hands and turn it backwards.
- 3 Take out the clothes dropped into the outside of the spin tub.
- 4 Press the frame to reset and tighten screws.



Change the Position of the Drain Hose

The ex-factory installation position of the drain hose is located on the spin side. According to the installation site, the drain hose can also be installed on the wash side of the machine. The method is as follows:

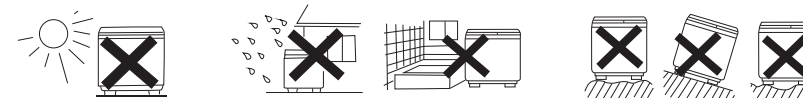
- 1 Unplug the power cord and drain the water in the hose completely.
- 2 Spread the soft material (e.g. a blanket) and place the washing machine on it gently.
- 3 Take the drain hose out from the buckle on the spin side, and put it into the buckle on the wash side.
- 4 Hang up components of the drain hose.



Installation Site

In order to avoid electrical failure, discoloration and deformation, do not install the product in the following places:

- Locations exposed to direct sunlight,
- Locations exposed to rain or high humidity,
- Uneven sloping surface and unstable ground.



产品型号

旧底图总号

底图总号

签字

日期

技术要求:

- 1、商标: Electrolux
- 2、尺寸: 210X143mm
- 3、其余符合QB/XL20产品说明书技术标准

颜色Ⓑ

颜色Ⓐ

颜色

图文均为黑色

标记处数	分区	更改文件号	签名	日期
设计			工艺	
制图			标准	
校对			会签	
审核			批准	

70克双胶纸		
阶段标记	重量	比例
A		
共 8 张	第 8 张	

宁波新乐电器有限公司

说明书

A1111PT1SMSWA